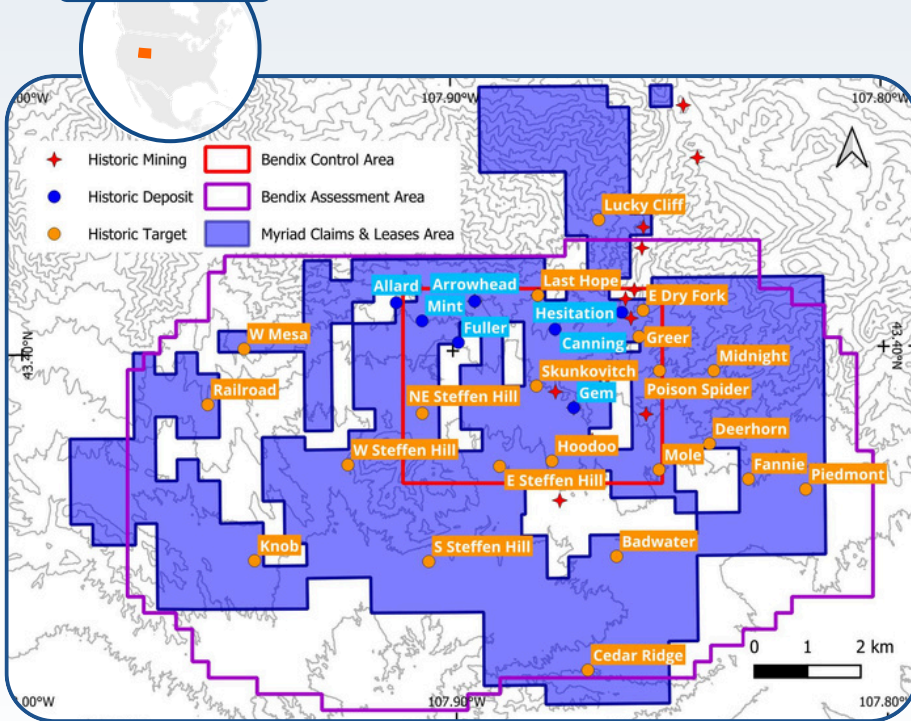


# TARGETING 100+ MLBS IN WYOMING, ARIZONA & NEW MEXICO

## Wyoming, USA



## COPPER MOUNTAIN URANIUM PROJECT

- District-scale, **18,000+ acre land package** in Wyoming, one of the the world's top uranium jurisdictions.
- Extensive historical work: US\$85m spent (current dollars) - **2,000 boreholes, 7 deposits** (historic resources) and **15+ mineralised targets**.
- Historic Resource Estimates\* totaling **26.6 MLbs @ 269 ppm eU<sub>3</sub>O<sub>8</sub>** (RMEC, 1977).
- \*A qualified person has not done sufficient work to classify the historical estimate as current mineral resources or mineral reserves. Myriad is not treating the historical estimate as current mineral resources or mineral reserves.
- Historic Exploration Target\*\*: **245 MLbs** in Control Area (80%-held) to **655 MLbs** in Assessment Area (62%-held) (Bendix, 1982).
- \*\*The potential quantity and grade is conceptual in nature. There has been insufficient exploration to define a mineral resource and it is uncertain if further exploration will result in the target being delineated as a mineral resource.

- **Cold War-era production**, with several mines such as Arrowhead, which produced 500k lbs @ 0.15% (official records).
- **Large-scale uranium mine planned** by Union Pacific and California Edison across 6 pits. Production planned to start 1983.

## Myriad's Phase I Drill Program Confirmed and Surpassed Historical Results

- 2024 drill program **verified and exceeded historic gamma results**, finding **entirely new deeper mineralization**.
- Chemical assays confirm U<sub>3</sub>O<sub>8</sub> grades **on average 60% higher** than eU<sub>3</sub>O<sub>8</sub> grades from gamma probe (at cut-off over 1,000 ppm). **Some intervals previously below cut-off now exceed cut-off**.

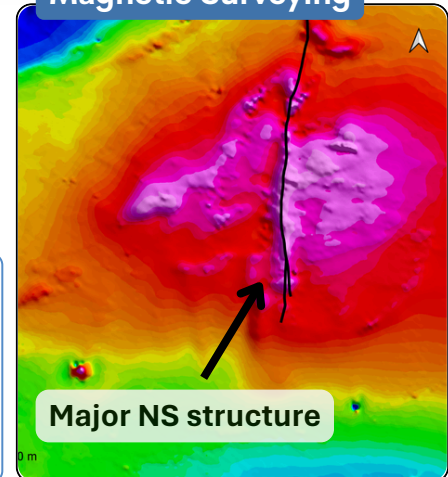
## New Geophysics Expands District Potential and Enhances Targetting

- Recent district-wide radiometric and magnetic survey has **confirmed numerous high-priority targets** supported by historical data. Many are in areas not previously drilled.
- **Surveys confirm significant potential to the east of known resources.**
- **140 radiometric anomaly points identified for follow-up investigation.**

## Fully Funded Phase Two Drill Program Commenced July 2026

- **April 20, 2026:** NI 43-101 filed on Copper Mtn; **historical resources of 27 MLbs and dramatic upside potential confirmed.** (eg, DOE endowment of up to 655 MLbs)
- **Testing targets generated from the geophysics, radiometrics, seismic and historical drill data.**
- **Laying the foundation to achieve the target of 100M+ lbs.**

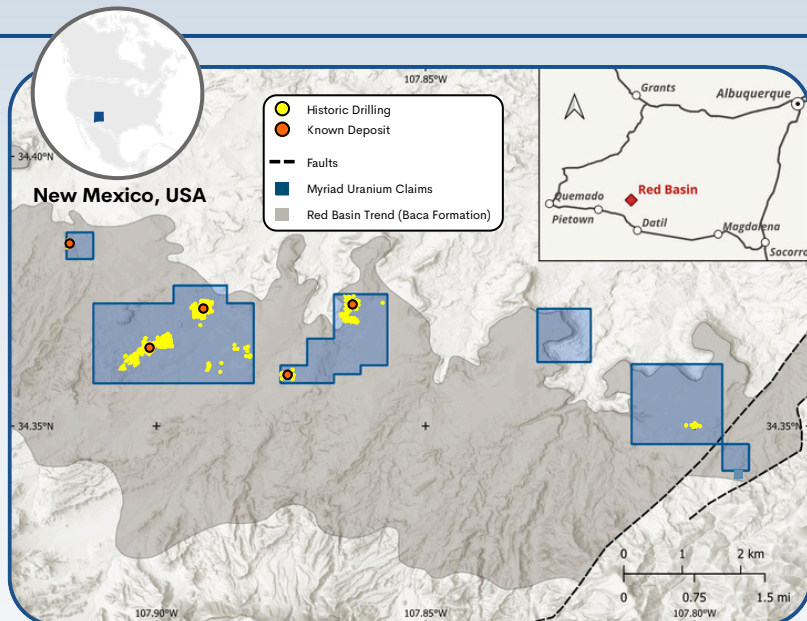
## Magnetic Surveying



## RED BASIN URANIUM PROJECT

- Acquired January 2025, for CAD \$525K
- **Earn-in achieved** November 2025, following completion of required high-resolution ground surveys
- **Historical resources** as well as a district-scale mineralisation target\* estimated at **25 - 45 MLbs** (New Mexico Bureau of Mines and Mineral Resources, 1981).
- \*The potential quantity and grade is conceptual in nature. There has been insufficient exploration to define a mineral resource and it is uncertain if further exploration will result in the target being delineated as a mineral resource.

**May 19, 2026: Sale Completed to Subatomic - New Venture Backed Technologists Overmatch and 8VC (Thiel and Lonsdale)**



- **Sale Price = US\$2.5M (return of over 6x cash-on-cash)**
- **Retained Interest = 10% free carried interest and 10% of any liquidity economics**
- **Strategic alliance to be formed on project pipeline**

## Upcoming Milestones

- **Acquire 100% of Copper Mtn** from Rush Rare Metals by way of announced merger. **Ownership currently at 75%.**
- Advance Copper Mtn via drilling, geophysics, expansion.
  - Key targets: Midnight, Lucky Cliff, Cedar Ridge
- Move to NASDAQ or NYSE, preparation in process.

## Capital Structure

\*As at July 8, 2026

Shares Issued & Outstanding	113,511,914
Warrants (@ \$0.25 - \$0.55)	40,229,920
Stock Options (@ \$0.20 - \$0.50)	8,870,000
RSUs (@ \$0.40 and \$0.50)	5,340,000
<b>Fully-Diluted</b>	<b>167,951,834</b>

## Senior Executives and Technical Committee



**Thomas Lamb**  
CEO



**Simon Clarke**  
Chairman



**Nelson Lamb**  
CFO



**George van der Walt**  
Qualified Person



**Jim Davis**  
Senior Advisor

### QUALIFIED PERSON

The technical information has been reviewed and approved by George van der Walt, Principal Consultant for The MSA Group (Pty) Ltd, a "Qualified Person" as defined in NI 43-101 who is not independent of the Company. The resource estimates and targets for the Copper Mountain and Red Basin are considered historical. A QP has not done sufficient work to classify these as current resources, and the Company is not treating them as such. Further details about the historic estimates can be found in the NI 43-101 Technical Report titled "Copper Mountain Uranium Project, Fremont County, Wyoming, USA - 17 April 2026".